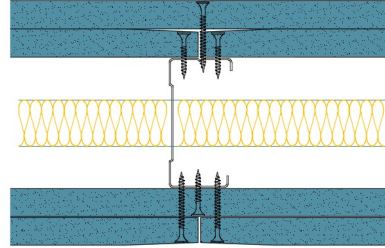


## 70-S-60(25) - SPEEDLINE System Data Sheet - Version V1 (24-10-23)

SPEEDLINE 70mm 'C' Stud Partition @600mm Ctrs,  
with 2x Siniat GTEC 15mm dB Board each side,  
25mm APR



### System Performance Breakdown

Fire Resistance:

BS476 Part 22:1987:

Test Ref & Date or Applied Ref & Report:

Max Height:

Thickness:

Duty Grade: BS 5234: Part 2:1992:

Sound Insulation:

**90/90 Minutes** (Integrity/Insulation).

**BRE-P100456-1085 - BRE Report P102396-1011C**

**Refer to Speedline Specification Clause**

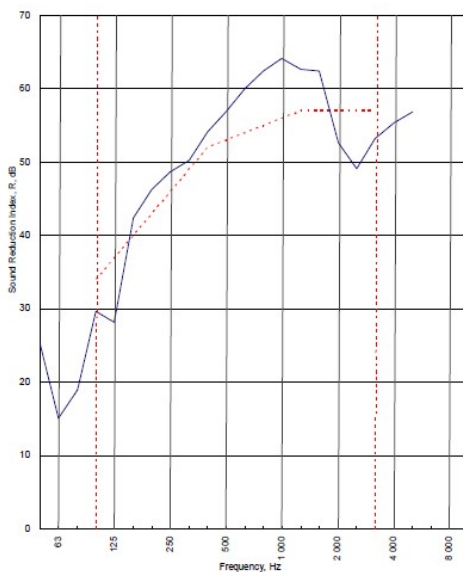
**132 mm.** (At Base Track, Excluding Finishes)

**Severe - Annexes A-F**

**53  $R_w$ dB**, Date Tested or Assessed Against - 30/10/2012

Test Code:  
**H18022AA**  
Test Date:  
**30/10/2012**


Freq. Hz	R dB
50	25.2
63	15.1
80	19.0
100	29.7
125	28.2
160	42.4
200	46.3
250	48.7
315	50.3
400	54.1
500	56.9
630	60.0
800	62.4
1 000	64.1
1 250	62.7
1 600	62.4
2 000	52.7
2 500	49.1
3 150	53.2
4 000	55.4
5 000	56.8
6 300	
8 000	
10 000	





----- Curve of reference values (ISO 717-1)


Rating according to BS EN ISO 717-1:1997	<b><math>R_w</math> (C;Ctr) = 53 (-3;-8) dB</b>		
Evaluation based on laboratory measurement results obtained by an engineering method:	<b>Max dev. 8.8 dB at 125 Hz</b>		
	$C_{50-3150} = -7$ dB	$C_{50-6300} = -6$ dB	$C_{100-8000} = -2$ dB
	$C_{125-1600} = -18$ dB	$C_{125-4000} = -18$ dB	$C_{125-10000} = -8$ dB

TESTED AT ONE OF THE UKAS ACCREDITED LABORATORIES BELOW

B.T.C (H-Ref on Graph) 

B.R.E 

AIRO 

S.R.L 



Customer: **Metsec plc Hepsec Division**

BTC 18022A: Page 9 of 11

SPEEDLINE Drywall Systems, Adsetts House, 16 Europa View, Sheffield Business Park, Sheffield, S9 1XH.

Tel: 0114 231 8030.

Email: [enquiries@speedlinedrywall.co.uk](mailto:enquiries@speedlinedrywall.co.uk)

(As per the requirements set out in ISO/IEC 17025:2017 regarding test data the results stated have been carried out by voestalpine Metsec plc as part of the contract to supply Speedline Metal Sections to SIG Plc)